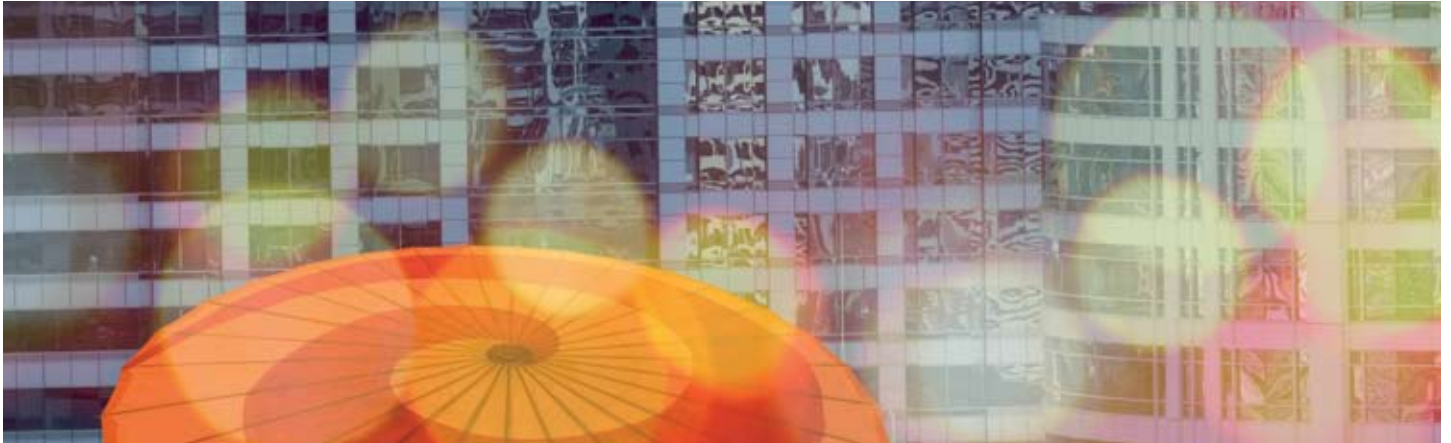
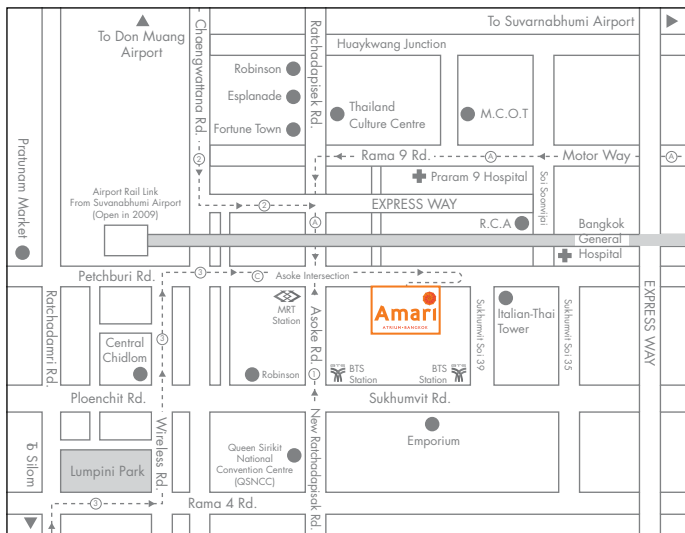


# FACT SHEET



## FEEL THE PULSE OF BANGKOK



### LOCATION

Strategically located in Bangkok's busy commercial and retail area, New Petchburi Road, the Amari Atrium Bangkok makes an ideal base for both the business and leisure guest, just minutes away from a choice of superb shopping centres, Sukhumvit, the Thailand Culture Centre, Queen Sirikit National Convention Centre and several embassies. The subway system is within walking distance. Fast access to the city's expressway system means just a 25-minute drive from the airport and 45 minutes from the rapidly developing Eastern Seaboard.

### ACCOMMODATION

568 well-appointed rooms, including several Executive and Deluxe Suites. All rooms have private bathroom with bathtub and shower, hairdryer, full length mirror, complimentary bathroom amenities, 220V/110V shaving only electrical points, electronic door locking system for maximum security, personal safe, minibar, remote-control colour TV and satellite reception, IDD phone facilities and individually controlled air-conditioning.

Smoking rooms, inter-connecting rooms and guest rooms for the disabled are available. A broadband internet connection can be setup in any room.

Amari Atrium Bangkok has 23 stories with a 12-storey atrium lobby. The top 2 levels of the hotel comprise the Executive Floors, designed to combine modern technology with comfort and convenience. The following are amenities available in the Executive Rooms: hi-fi stereo, 25" and 32" TV, trouser press, fax machine, office tray amenities, scales, magnifying mirror and DVD player.

### EXECUTIVE FLOORS

The Executive Floors feature an Executive Lounge, separate express check-in/check-out, complimentary executive breakfast and evening cocktails, cocktail/reading lounge and executive business assistance.

### SERVICES & FACILITIES

- 24-hour Reception, Porter and Concierge Service
- Business Centre
- Postal Services
- Foreign Exchange Facilities
- Laundry and Valet Services
- Limousine Service
- Babysitter
- Medical Service
- Beauty Salon
- Shopping Arcade, including Tailor
- Laundry & Dry Cleaning facility
- Tour Desk (Sightseeing Service)
- Parking (316 cars)
- Separate Group Check-in and Check-out Area

### SPORTS & RECREATION

- Swimming Pool with Whirlpool and Sun Deck
- Children's Pool
- Clark Hatch Fitness Centre featuring
  - Gymnasium
  - Steam Room
  - Aerobics & Workout Studio
  - Massage Rooms
  - Sauna

### FOOD & BEVERAGE

- Vivaldi
- Cascade
- Mingles Pub & Restaurant
- Cascade Lobby Bar
- Room Service
- Pool Bar

### TRANSPORTATION

From	Distance	Time	By
Suvarnabhumi Airport	28 km	25-40 mins	Car
City Centre	3 km	15 mins	Car
Bitec Convention Centre	20 km	25-40 mins	Car
QueenSirikit Convention Centre	2 km	10 mins	Car
Eastern Seaboard	80 km	45-60 mins	Car
Makkasan (Airport Rail Link)	1.2 km	5-10 mins	Car

## GENERAL INFORMATION

### Credit Cards:

All major international credit cards are accepted i.e. American Express, Diners, Visa, Master Card, JCB, TFB, BBC and SCB.

### Reservations:

For reservations, please call the hotel directly on

T +66 (0) 2718 2000

F +66 (0) 2718 2021

E reservations@atrium.amari.com

## BUSINESS SERVICES

### Pre-Function Foyer:

For pre-function cocktails, pre-dinner gatherings, after conference & banqueting and break-out sessions. Directly accessible from the hotel lifts.

## CONFERENCE & BANQUETING FACILITIES

FUNCTION ROOM NAME	SIZE (M)	AREA (SQ.M)	THEATRE STYLE	CLASSROOM STYLE	U-SHAPE	HOLLOW SQUARE	BOARDROOM	FORMAL DINNER	COCKTAIL RECEPTION	BUFFET
<b>2nd floor</b>										
<b>Busarakam Ballroom</b>	13.5 x 22.5	304	340	180	75	85	-	200	400	200
Section 1	13.5 x 8.0	108	120	54	35	45	-	60	100	50
Section 2	13.5 x 8.0	108	120	54	35	45	-	60	100	50
Section 3	13.5 x 6.5	88	100	54	35	45	-	60	100	50
<b>Pailin Function Room</b>	10 x 20.5	205	170	80	60	65	-	150	250	120
Section 1	10 x 12.5	125	90	60	35	35	-	90	150	70
Section 2	10 x 8.0	80	70	40	25	25	-	40	70	30
<b>Tubtim Meeting Room</b>	9.5 x 6.8	64.6	70	40	25	35	-	40	70	30
<b>Morakot Boardroom</b>	6.0 x 4.1	24.6	-	-	-	-	10	10	-	-
<b>Pei-Tai Room</b>	6.75 x 8.6	58.05	40	30	20	26	-	50	50	30
<b>Opal Room</b>	6.75 x 4.15	28.01	20	-	-	-	-	20	25	20
<b>22nd - 23rd floor</b>										
<b>Deluxe Suites Meeting Rooms</b>	6.4 x 4.0	25.6	15	9	15	-	14	10	30	-

\*Remark: Above figures are without stage, dancefloor or equipment in the room

## AUDIO VISUAL FACILITIES

### Sound System:

Using the latest technology, state-of-the-art sound systems have been installed in the ballroom and all function rooms. Equipment available for functions at the Amari Atrium Hotel includes:

- Microphone: Boom Stand, Table Stand and Wireless
- Loudspeaker: Ceiling and Mobile Computerised Sound System
- Tape Recorder: CD
- Background Music: Piped in (one channel)/CD Player
- Telephone: Plug-in/Wireless System

### Projection Equipment:

- 8mm (super) Projector
- 16mm Sound Projector
- 100" Video Projector screen
- Overhead Projector
- Colour Television (21" screen)
- Laser Pointer
- Multivision Shows, Film Projections, etc. can be arranged on request
- Screens:
  - 360 x 360cm (hanging)
  - 210 x 210cm (hanging)
- LCD Overhead Display
- Video Player